

HIGH VOLTAGE LINK BOX (HVLB-COAX) FOR CABLE SHEATH BONDING WITH CONCENTRIC CABLE

KEY FEATURES

- Impulse withstand:
75 kV
- Short circuit current:
63 kA/1 s
- Internal power arc:
25 kA/0,1 s
- Tight against water and
dust according to
protection class IP688
- Gland sealing with WCSM
heat shrinking tube
- Sequential serial number
for each link box

TE Connectivity's (TE) high voltage link box HVLB provides a sealed and dry environment for high voltage cable sheath earthing connection. It reduces voltages and circulating currents.

TE offers three types of link boxes with different number of entries to bond the cable sheath to the ground: HVLB-COAX-**SLV**, HVLB-COAX-**GND** and HVLB-COAX-**CRO**.

Within the HVLB-COAX-SVL link box, the cable sheath is earthed via a Sheath Voltage Limiter (SVL). The HVLB-COAX-GND link box is used to earth the cable sheath direct to the ground without a SVL. Within the HVLB-COAX-CRO link box the cable sheaths are crossbonded.

To get an easy access to the cable sheath for inspections, TE developed a reliable gasket-lid-system, which is tighter against water and dust. The lid system is equipped with a proof device for padlocks to prevent unauthorized access.

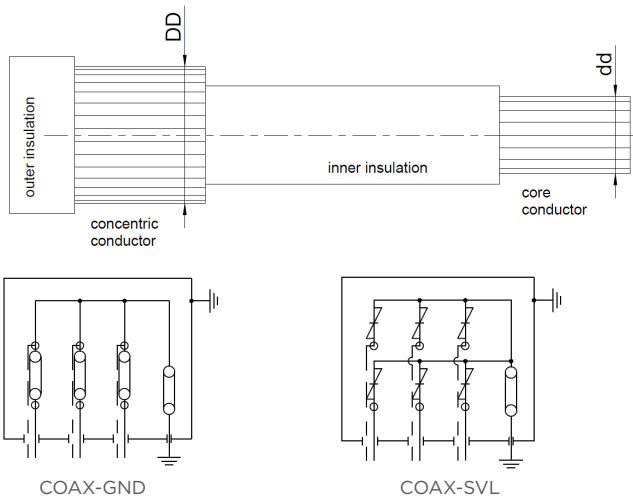
A well-arranged configuration ensures a higher reliability. Homogeneous distances between the electrical path, trustworthy electrical connections and a special developed short-circuit-yoke allow a better impulse-voltage and short-circuit withstand. For safety in an unexpected case, our box is tested to absorb the power of an internal arc with 25 kA for 0,1 sec.

Customers can count on consistent, high quality products, driven by TE's proven innovation and backed by our extraordinary customer support.

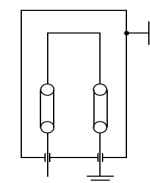
High Voltage Link box (HVLB-COAX)



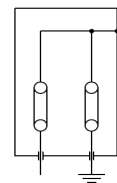
PRODUCT SELECTION - BASIC TYPES							
	# of cable entries	Size of the SVL	Housing earthing type	Cable port specification			Modification
Basic description		1 kV: CPA-01-017	sep = separately col = collective	Ø of core conductor in mm	Ø of concentric conductor in mm	Ø of grounding connection S1 = 0 - 95 mm ² S2 = 95 - 240 mm ² S3 = 240 - 400 m ² C8 = 500 mm ² S = shear bolt C = crimp	M01 (standard) Mxx (customer specific)
		2 kV: CPA-02					
DIRECT GROUNDING							
HVLB-COAX-GND	3	./.	sep / col	dd	DD	S1 / S2 / S3 / C8	M01 / Mxx
VIA SHEATH VOLTAGE LIMITER (SVL)							
HVLB-COAX-SVL	3	1 / 2 / 3 / 4 / 5 / 6 / 7 / 8 kV	sep / col	dd	DD	S1 / S2 / S3 / C8	M01 / Mxx
CROSS-BONDING							
HVLB-COAX-CRO	3	1 / 2 / 3 / 4 / 5 / 6 / 7 / 8 kV	sep / col	dd	DD	S1 / S2 / S3 / C8	M01 / Mxx
CREATION OF PRODUCT DESCRIPTION SHOWN BY THE EXAMPLE OF HVLB-COAX-SVL-3-6KV-COL-12-30-S2-M01							
HVLB-COAX-SVL	3	6 kV	col	12	30	S2	M01



Housing earthing type



Separately
(housing and busbar not connected)



Collective
(housing and busbar connected)

TECHNICAL INFORMATION	
Material of the housing	SS304 / X5CrNi17-10
Surface painting	RAL7035, thickness 0,08, fine structure outdoor
Optional	Offshore protection
Optional	Plexiglass cover (protection against accidental contact)

te.com/energy

© 2018 TE Connectivity. All Rights Reserved. EPP-2982-DDS-4/18-HVLB-Link-Box-SICO-TE

TE, TE Connectivity and TE connectivity (logo) are trademarks. Other logos, product and/or company names might be trademarks of their respective owners. While TE has made every reasonable effort to ensure the accuracy of the information in this data sheet, TE does not guarantee that it is error-free, nor does TE make any other representation, warranty or guarantee that the information is accurate, correct, reliable or current. TE reserves the right to make any adjustments to the information contained herein at any time without notice. TE expressly disclaims all implied warranties regarding the information contained herein, including, but not limited to, any implied warranties of merchantability or fitness for a particular purpose. The dimensions in this data sheet are for reference purposes only and are subject to change without notice. Specifications are subject to change without notice. Consult TE for the latest dimensions and design specifications.

FOR MORE INFORMATION: TE Technical Support Centers

USA:	+ 1 800 327 6996
Canada:	+ 1 (905) 475-6222
Mexico:	+ 52 (0) 55-1106-0800
Latin/S. America:	+ 54 (0) 11-4733-2200
France:	+ 33 380 583 200
UK:	+ 44 0870 870 7500
Germany:	+ 49 89 6089 903
Spain:	+ 34 916 630 400
Italy:	+ 39 333 250 0915
Benelux:	+ 32 16 508 695
Russia:	+ 7 495-790 790 2-200
China:	+ 86 (0) 400-820-6015